

四川工业科技学院

2020-2021 学年本科教学质量报告

四川工业科技学院

2021 年 11 月

	1
	1
	2
1	2
2	2
	3
	5
	5
	7
	7
1	7
2	8
	9
1	9
2	9
3	10
4	10
5	10
	12
	12
1	12
2	13
3	13
4	13
5	14
6	14
7	15
	15
1	15
2	15
3	15

4	16
5	16
6	17
	17
1	17
2	17
3.	17
4	18
5	18
6	18
7	19
8	19
	19
	19
1	19
2	20
3	20
	20
1	20
2	20
3	21
4	21
5	21
6	22
7	22
8	22
	22
	22
	23
	24
	24
	24
	24
	24

		24
1		24
2		24
		25
		27
		27
1		27
2		27
3		27
4		28
		28
1		28
2		28
3		29
4		29
5		29
6		29
		30
1	+	30
2	+	30
3	+	30
4	+	31
5	+	31
6	+	32
		32
		32
		32
1		33
2		33
3		33



90

1

2

3

4

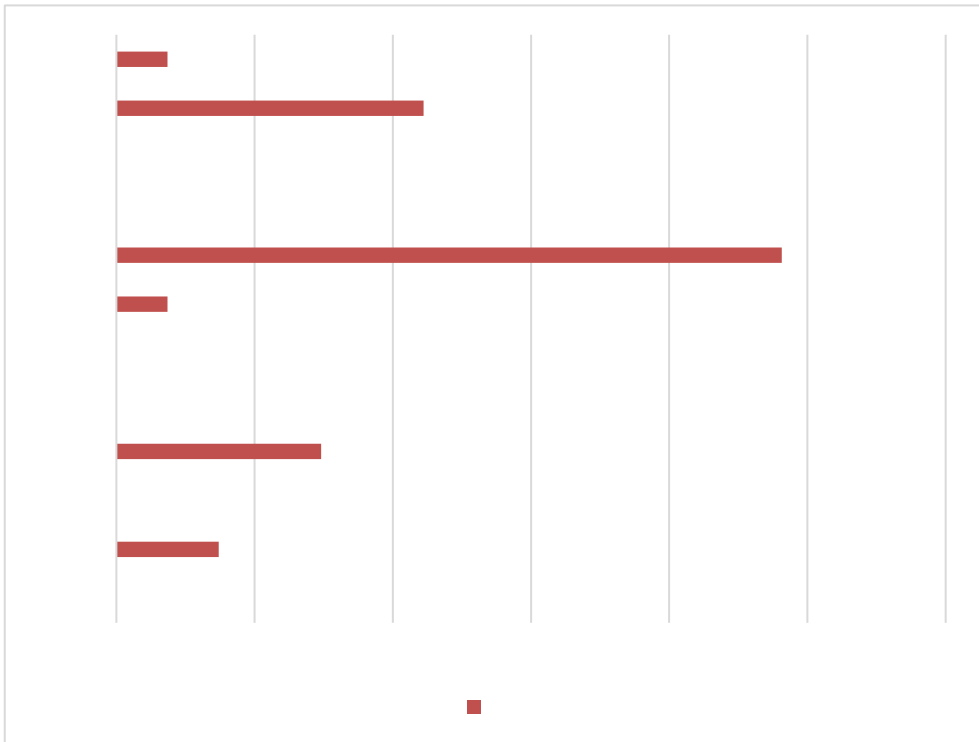
5

6

7

2
2
27 6
4
2

1-1



2020 2021

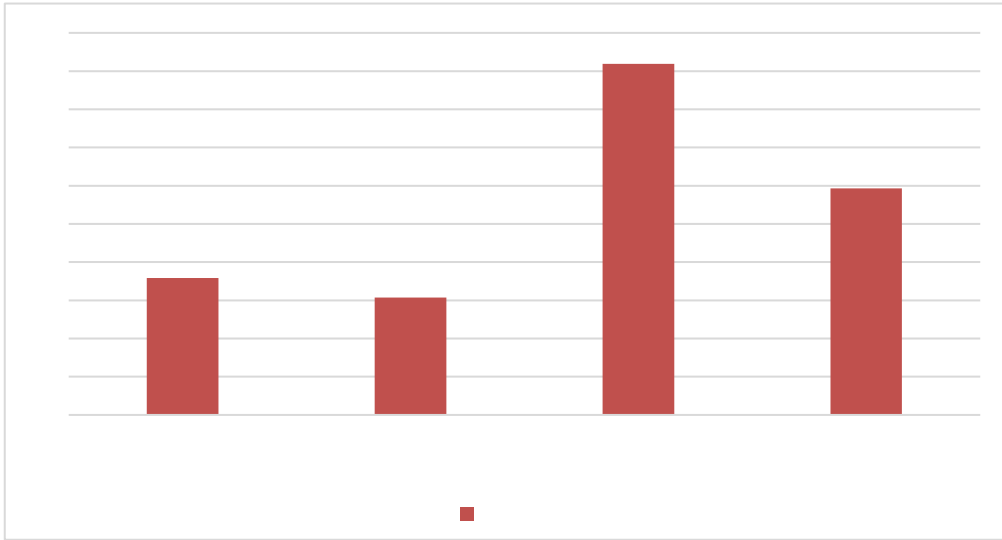
2021

157

3

2020 2021 13330 2591 6019
 2970 1750 22701
 14625 2020 8076
 64.42%

18 17 17
 6 27 6 12 27
 44.44% 2021 7965 7965
 6840 100.00% 85.88% 7651
 314 96.1% 3.9 %
 1-2



1

	2020	2757.1	298.6
	85.28		1214.53
2	204.17	58.31	
	149.69 m ²	134.35 m ²	
	57.78 m ²		+
	329136.14m ²	67874.73m ²	420.0m ²
	97228.63m ²	23997.84m ²	
	19901.85m ²		
	22701	65.94 m ² /	
	25.45 m ² /	14.50 m ² /	
	4.28 m ² /	1.06 m ² /	
0.88 m ² /	2-3		

+

+

1

5

25

25

100.00%

5

20.00%

4

2

2

2

2021

2

30%

50%

25%

3

3 4

4

4

4

4

1 3 3 5
2 7 7
1426
90551

2020 20 8 2 2 1
5 2 2 2

6 100%

40

7

7.58

2

4

3D ()-

0 36

3D ()-

6

3

3

5

6

1

2

,

3.

4

2020-2021 1513 256
8 750 syb
428 70% 100%
5

4583 500 500
167 900 2020
221 7.06% 0.1
6.79% 7.35%

6

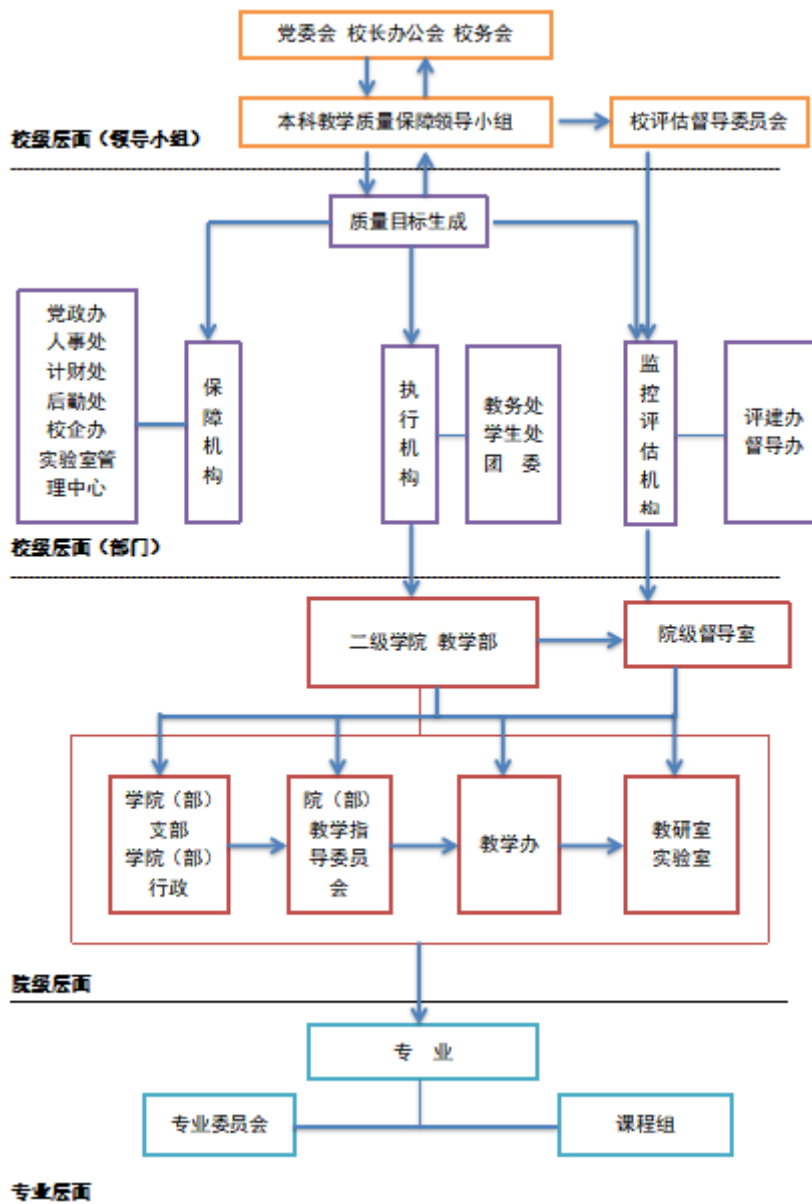
56

16

2

1 2

3



3

4

5

6

- - -

7

8

12.9

2021					157	
		8.9%	87	2		89
2021			1683		1647	97.86%
	97.81%					
2020	9	2021	9			
				2	4	5
	27	44		54	9	3
1						
2020	2021					93.179
	85.71		91.373			93.512
	82.35		91.86			
2						
		2020-2021				
		5.46%				17.17%
38.99%	30.84%					

2020-2021

1

3

2

PPT

2

MOOC

1

3

3

5

2

7

7

3

4

⤿

1

2

3

1144

4

5

+

6

三

4 +
2020 VR/AR/3D 2019 2018
2019 2021
2 3 1 2018
17 45 10 2
3D

5 + ≡
500-600
2019 2018 VR/AR/3D 3D
2025 3D

+ + +

44

+

6

+

3D

3.5+0.5

3D

2016

2015

-

2017

3D

211 985

1

2

3

+